

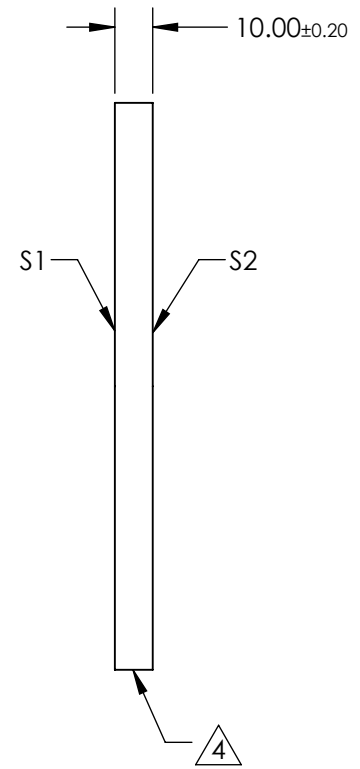
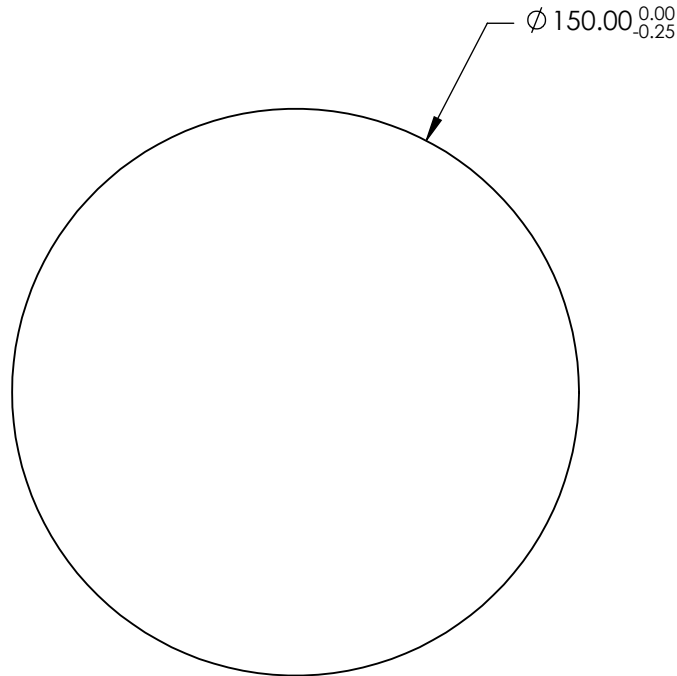
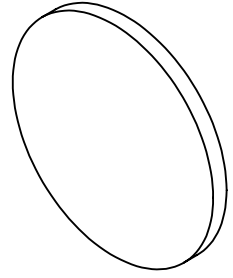
NOTES:

- 1. SUBSTRATE: N-BK7
- 2. S2 TO BE PARALLEL WITH S1 TO <1 ARCMIN
- 2. COATING (APPLY ACROSS CLEAR APERTURE)

S1&S2: R(ABS) ≤0.25% @ 880nm
 R(AVG) ≤1.25% @ 400 - 870nm
 R(AVG) ≤1.25% @ 890 - 1000nm

4. FINE GRIND SURFACE

- 5. ROHS COMPLIANT



**FOR INFORMATION ONLY:
 DO NOT MANUFACTURE
 PARTS TO THIS DRAWING**

SPECIFICATIONS SUBJECT TO CHANGE WITHOUT NOTICE
 DIMENSIONS ARE FOR REFERENCE ONLY

	S1	S2
SHAPE	PLANO	PLANO
SURFACE QUALITY	60 - 40	60 - 40
CLEAR APERTURE	∅ 135.00	∅ 135.00
BEVEL	PROTECTED AS NEEDED	PROTECTED AS NEEDED



ALL DIMS IN mm

EO® Edmund Optics®

TITLE	150mm Dia., 10mm Thick, VIS-NIR Coated λ/4 N-BK7 Window	
DWG NO	26677	SHEET 3 OF 3