

NOTES:

1. COATING

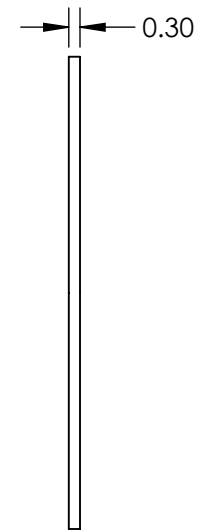
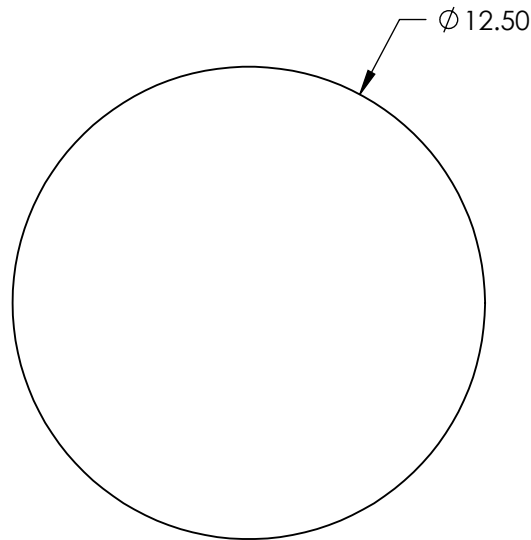
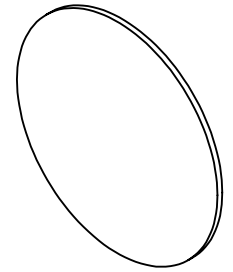
PERFORMANCE SPECIFICATIONS:

CWL: 577nm

TRANSMISSION %: >85

2. POWER, IRREGULARITY, AND SURFACE QUALITY SPECIFICATIONS
APPLY ACROSS CLEAR APERTURE

3. ROHS COMPLIANT



**FOR INFORMATION ONLY:
DO NOT MANUFACTURE
PARTS TO THIS DRAWING**

SPECIFICATIONS SUBJECT TO CHANGE WITHOUT NOTICE
DIMENSIONS ARE FOR REFERENCE ONLY

EO® **Edmund Optics**®

| | | |
|----------------|---------|---------|
| | S1 | S2 |
| SHAPE | PLANO | PLANO |
| CLEAR APERTURE | ∅ 11.25 | ∅ 11.25 |

| | |
|------------------------|----|
| THIRD ANGLE PROJECTION | |
| ALL DIMS IN | mm |

| | | |
|--------|--|------------------|
| TITLE | Everix Ultra-Thin OD 4 Notch Filter, 577nm, 12.5mm Diameter | |
| DWG NO | 23678 | SHEET 7 OF 15 |